

Updates on Salmon Habitat
Recovery & Watershed Planning
in the
Klickitat & White Salmon Basins

Klickitat Lead Entity Organization

- Primary Function:
Evaluate and Prioritize Projects for Grant Funding Through Salmon Recovery Funding Board (SRFB) Program.
- To Date: 34 Projects – Total \$5,815,661 in SRFB Grant Funding.

Klickitat Lead Entity Organization

- Lead Entity: Klickitat County.
- Klickitat Citizens Review Committee (CRC):
 - Citizens-Based Evaluation & Prioritization of Habitat Projects;
 - Adaptive Management Strategy; and
 - Habitat Work Schedule.
- Klickitat Technical Committee:
 - Provides Technical Support to CRC.

2009 SRFB Grant Cycle Funding Estimates

- State-Wide \$15 Million (Very Rough Estimate)
 - Federal Pacific Coast Salmon Recovery Funds
 - Washington State Funds
- Mid-Columbia Region \$1,480,000 (Estimate)
 - Klickitat River Basin \$590,000 (40%)
- Lower Columbia Region \$2,250,000 (Estimate)
 - White Salmon River \$112,500 (5%)

2009 SRFB Grant Cycle Application Materials

- Manual 18 Includes Grant Applications will be Available in May on Washington State Recreation and Conservation Office (RCO) Web Site:

<http://www.rco.wa.gov/srfb/docs.htm>

2009 SRFB Grant Cycle

- Submit Applications via RCO's Online Database – PRISM
<http://www.rco.wa.gov/rco/prism/prism.htm>
- Design Only Projects (up to \$200,000) No Match Requirement
 - All Other Projects 15% Match
- Combination Projects (Acquisition with Planning or Restoration Elements) 18 Months to Complete Acquisition.

SRFB Project Conference

- April 15-16 – Little Creek Conference Center in Shelton, WA

<http://www.rco.wa.gov/srfb/conference.htm>

Grant Schedule -- Tentative

- May 8: Submit Preliminary Application in PRISM.
- May 21: Preliminary Technical Evaluation.
- June 18: Project Tour and Technical Evaluation.
- July 10: Submit Complete Application
- July 23: Technical Ranking of Projects
- August 6: Present Project to CRC for Evaluation and Prioritization.
- September 1: Final Submission to SRFB via PRISM
- October 6: Draft Reviews – Projects of Concern.
- Mid-October: Lead Entity/Recovery Organization Presentations to SRFB Review Panel.
- Mid-December: SRFB Funding Meeting.

Klickitat Lead Entity Region Salmon Recovery Strategy

- Top Tier Actions and Areas Matrix
 - Prioritized River Reaches and Subbasins:
 - Rational for Reach/Subbasin Ranking;
 - Species and Life History Significance;
 - Limiting Habitat Factors;
 - Habitat Forming Processes;
 - Prioritized Actions/Needs;
 - Rational for Actions;
 - Community Interest (Supporting and Limiting).

Habitat Work Schedule

- Public Internet Portal
- Web-Enabled GIS Mapping Tools
- File Sharing
- Project Information, Maps, and Reports

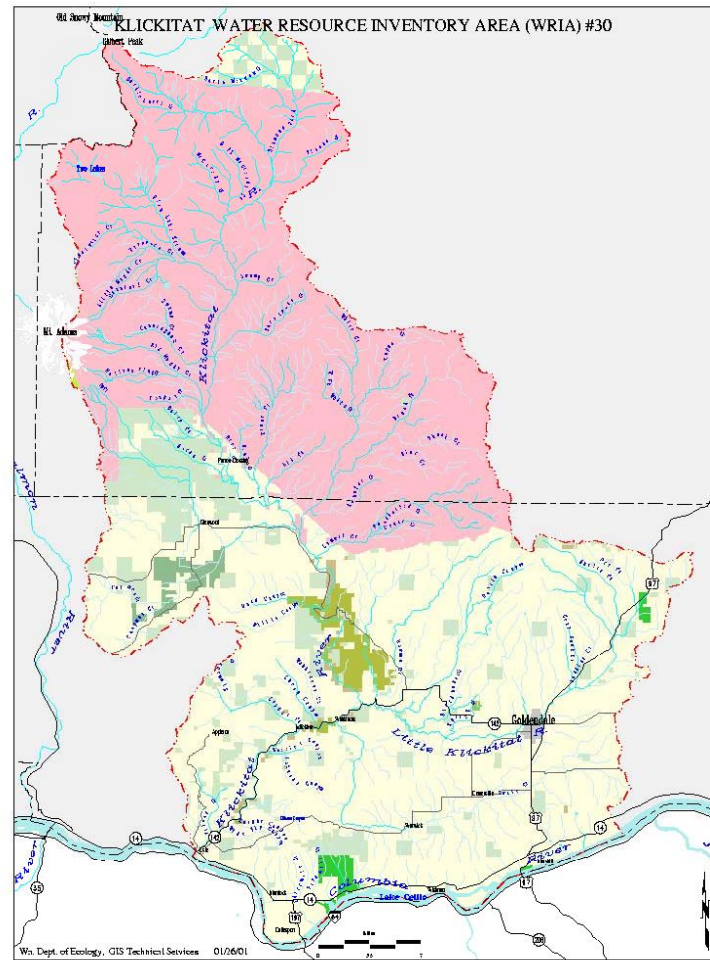
<http://hws.ekosystem.us/>

Watershed Planning

Water Resource Inventory Area 30 (WRIA 30)

- Planning Elements:
 - Water Quantity (instream and Out-of-Stream);
 - Water Quality; and
 - Habitat.
- Watershed Management Plan Approved in 2006.
- Detailed Implementation Plan Approved in November 2008.

Water Resource Inventory Area 30 (WRIA 30)



Water Quantity

- Priority Issues:
 - Current & Future Water Demand;
 - Climate Fluctuations & Water Availability;
 - Summer Stream Flow in Little Klickitat River.
- Strategies Include:
 - Surface & Ground Water Monitoring & Assessments;
 - Water Banking, Water Storage, Conservation, & Public Information.

Water Quality

- Priority Issues:
 - Little Klickitat River Temperature;
 - Nitrates in Ground Water;
 - Swale Creek Temperature;
 - Elevated Fecal Coliform Levels.
- Strategies Include:
 - Implement Little Klickitat River TMDL;
 - Develop Swale Creek Water Quality Improvement Plan;
 - Surface & Ground Water Monitoring & Assessments

Habitat

- Priority Issues
 - Fish Habitat Protection & Restoration; and
 - Potential Effects of Population Growth & Movement on Fish Habitat.
- Strategies Include:
 - Habitat Assessment & Monitoring to Guide Project Selection & Implementation (Adaptive Management);
 - Monitor Indicators e.g., Impervious Surface, Water Demand, Riparian Condition.

WRIA 29b

Watershed Planning

- WRIA 29 Watershed Plan Completed in 2006, but Covers Only Western Half of WRIA.
- 2007 Legislature Split Into WRIA 29a & WRIA 29b.
- Currently Trying to Initiate Planning for WRIA 29b – State Budget May Limit Progress for this Biennium.

Contacts

- Klickitat Lead Entity & WRIA 30 Watershed Planning: Dan McCarty
 - (509) 773-2353
 - danmc@co.klickitat.wa.us
- WRIA 29b & 31 Planning: Dave McClure
 - (509) 773-2481
 - davem@co.klickitat.wa.us

<http://www.klickitatcounty.org/NaturalR/>