



Conserving signature landscapes and vital habitat together with the landowners and communities of the Columbia River region.

# Columbia Land Trust

- Initiatives
  - Habitat
  - Working Forests
  - Urban Crown Jewels
  - Working Farms and Ranches
- Priorities and Focal Areas – East Cascades
  - Klickitat River
  - Hood River
  - The Dalles
  - The Columbia River Gorge



# Tools and Strategies

- Tools
  - Conservation easements
  - Fee simple
  - Conservation lease
  - Estate planning
  - Mitigation (limited)
  - Memorandum of Understanding
- Strategies
  - Willing landowners
  - Public and private partnerships
  - Community awareness and participation
  - Careful advocacy



# Accomplishments on the Klickitat River



## **Dillacort Creek Logging Camp Creek & Klickitat Cliffs**

- Bargain sales from rancher, Bill Giersch
- Almost 2,000 acres fee simple ownership
- Restoration projects are underway

# Oak Woodland Restoration



## Desired future condition

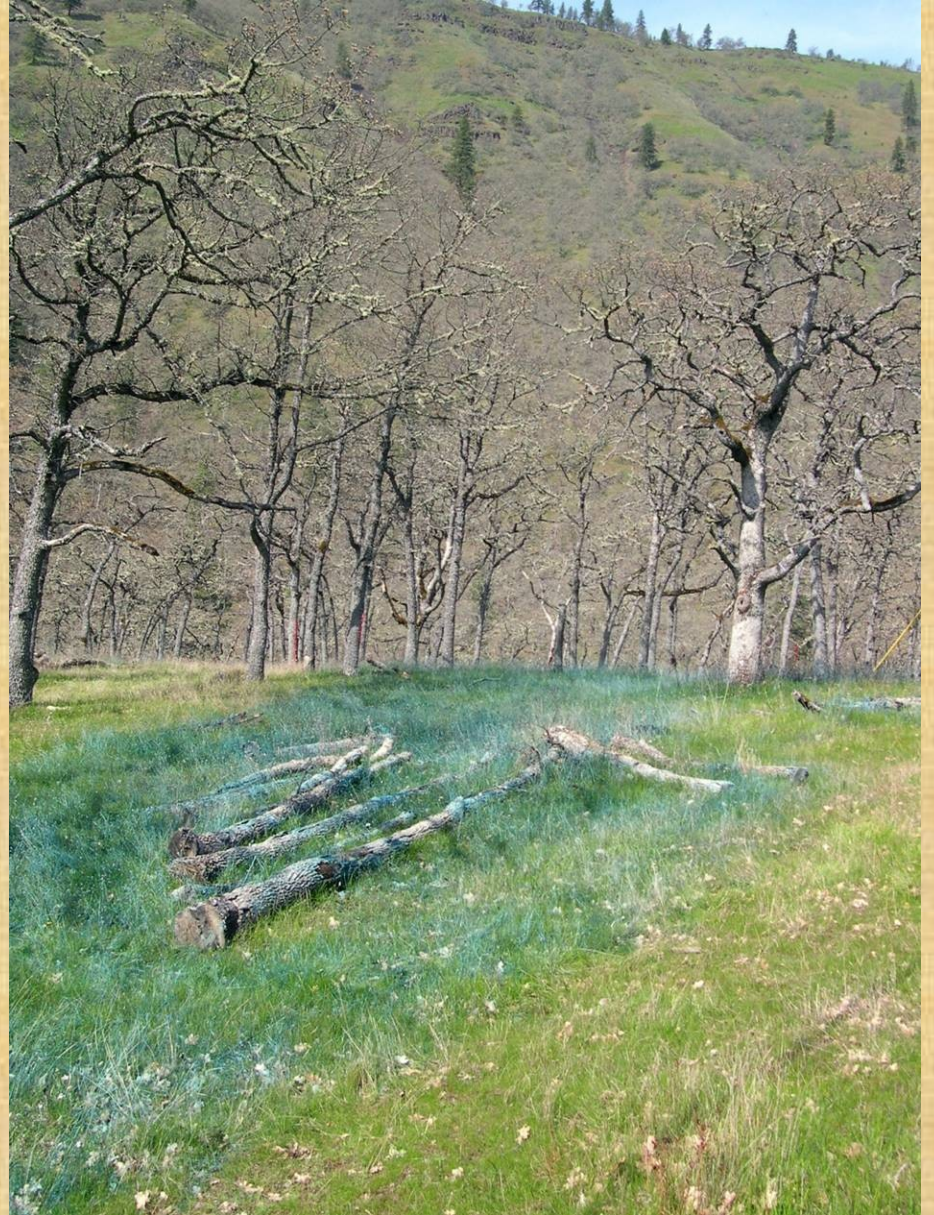
- Improve mast production and wildlife cavity resources
- Increase light levels to understory to recover native grasses/forbs
- Reduce risk of high severity fire and reintroduce historic fire regime
- Increase large diameter down wood level at levels that don't contribute to fire severity
- Balance fire fuels objectives with western gray squirrel habitat management
- Effectiveness monitoring

# BEFORE

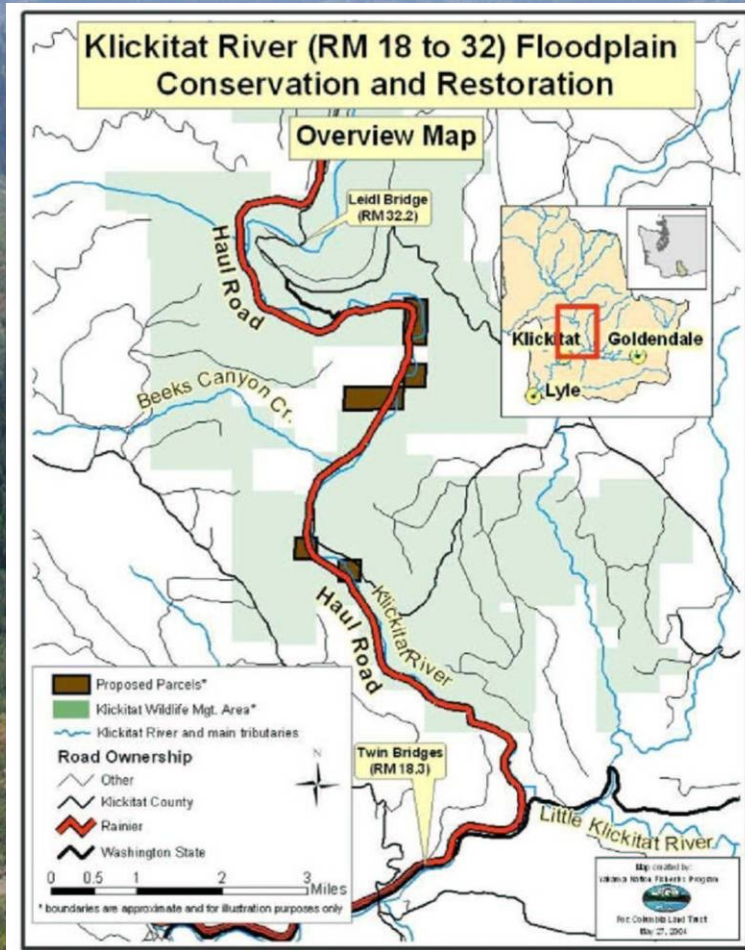


# AFTER





# Accomplishments on the Klickitat River



## Haul Road

- Purchased from Hancock with SRFB funds
- 14 river miles
- Last private access
- Restoration potential



# Haul Road Restoration



## Restoration potential for steelhead habitat

- Top tier reach
- Highly ranked for steelhead restoration by Klickitat Subbasin EDT model
- Partnership with Yakima Nation Fisheries Program, SRFB Funding
- Limiting factors: Channel complexity and bank structure
- Habitat enhancements: Breaching portions of the road to restore connectivity and pulling back and re-vegetating fill materials to enhance riparian vegetation.

